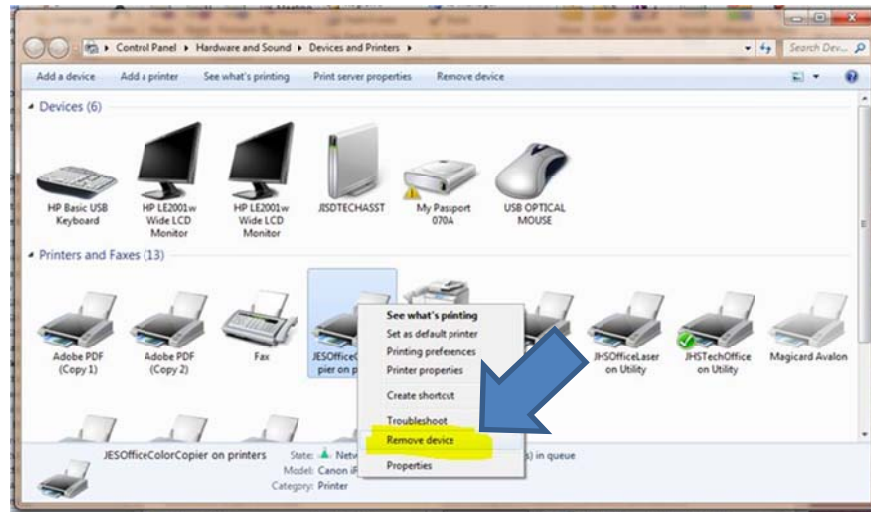


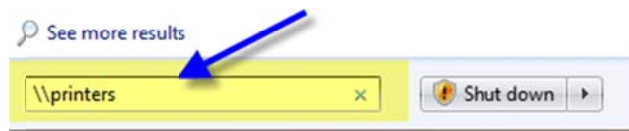
Remove a printer

1. Click the Start menu
2. Select Devices and Printers
3. Right click on the printer you wish to delete
4. Select Remove Device
5. Click Yes to remove printer

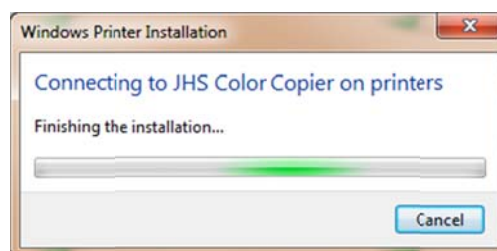
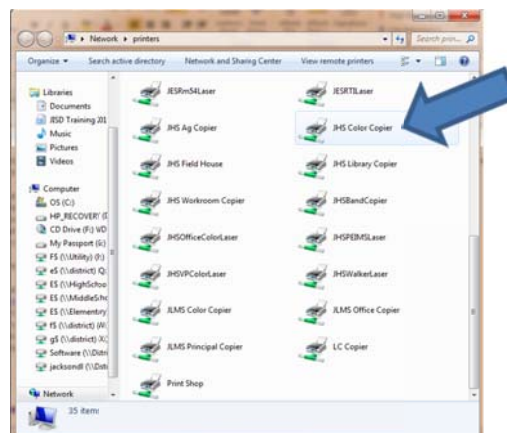


Load a printer:

1. Click the Start Menu
2. Type `\\printers`
3. Press return
4. **The Printers window opens**
5. **Double click the desired printer**



6. Click Yes when asked if you trust this printer



7. Click Install Driver
8. When the que window opens you are finished loading the printer
9. Printer will now show in Devises and Printers

