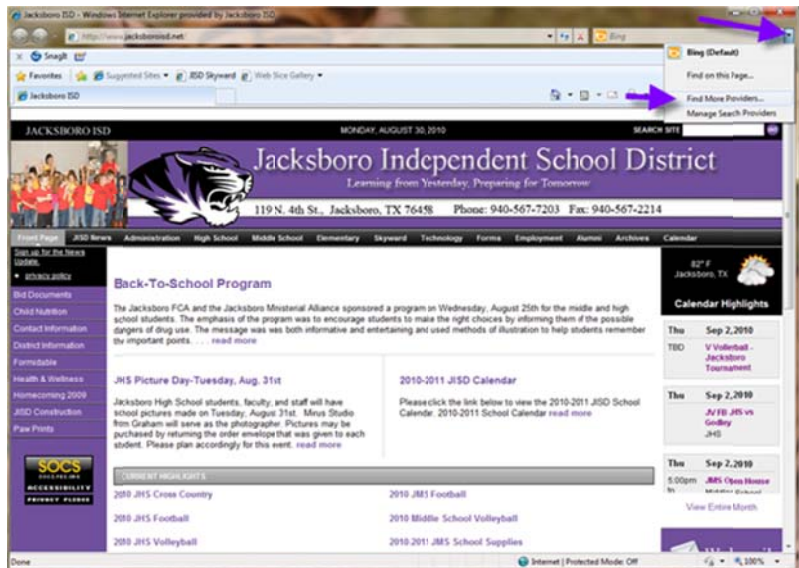


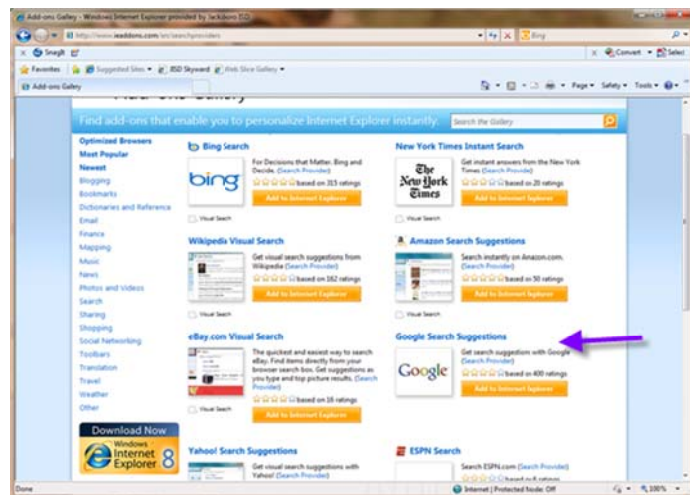
Change the default Search Provider in Internet Explorer

Currently the Search Provider showing in the upper right corner of Internet Explorer is Bing. If you prefer another provider you may change the default search provider by following these steps. In this scenario we will change to Google.

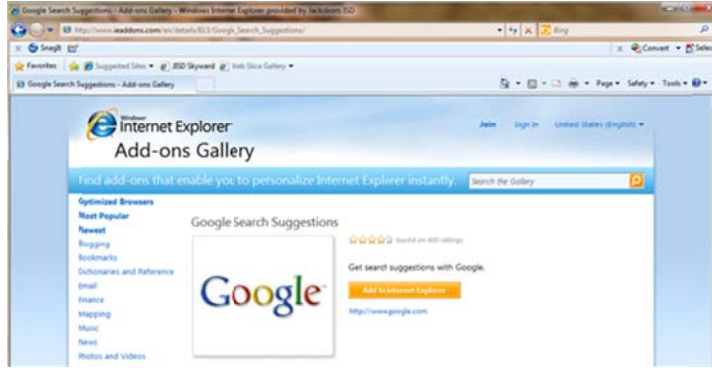
1. Open Internet Explorer.
2. Click the down arrow of the search provider in the upper right corner.
3. Select Find More Providers.



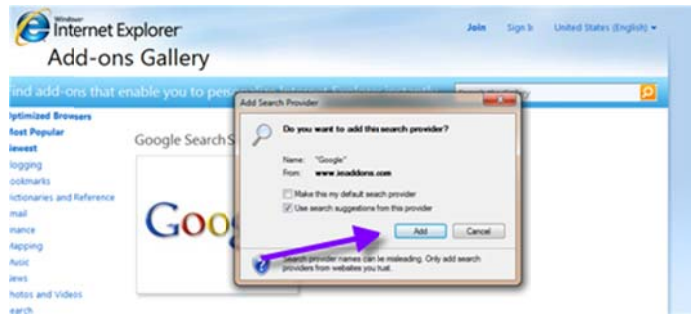
4. Select the provider you prefer. Click add to Internet Explorer.



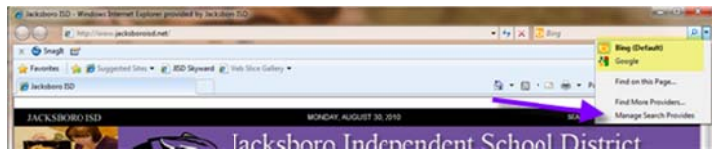
5. Click Add to Internet Explorer.



6. Click Add.



7. Using the drop down arrow, select Manage Search Providers.



8. Select the new provider and click Set as Default.

